



K C U I

# Nick Mawer

## Marketing Manager



**Kramer AV**



# We are Kramer

Kramer audio-visual experiences power creativity, collaboration, and engagement. From signal management to advanced cloud-based communication, collaboration and control solutions, Kramer technology breaks down walls, bridges gaps, and makes people feel closer together even when they're far apart.

We power  
engagement with  
the most intuitive  
end-to-end **audio  
visual experiences.**

# Product Domains



Audio-Visual  
Connectivity



Audio-Visual Signal  
Management



AVoIP



Audio



Audio-Visual Collaboration  
Applications



Audio-Visual  
Control



Audio-Visual Collaboration  
Devices

# Kramer Control



# What is the Pain Point?

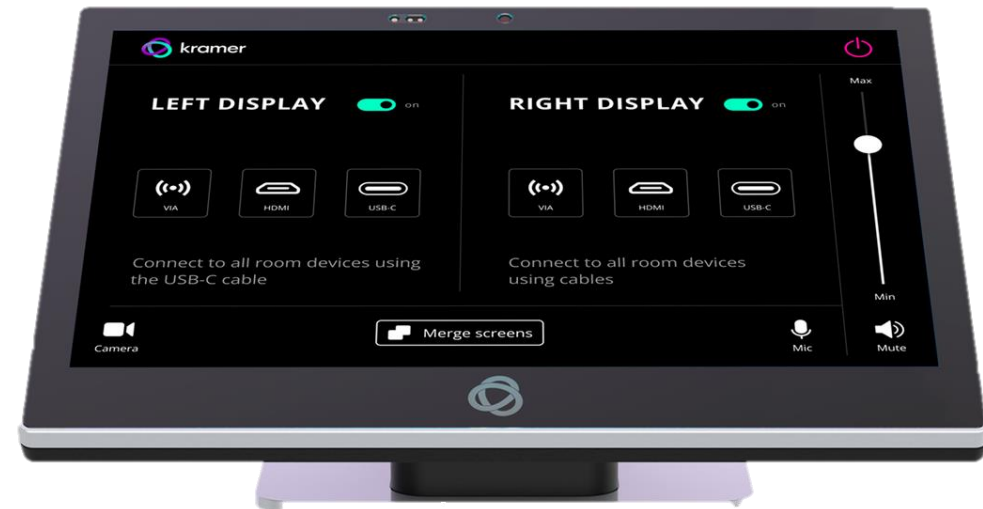
The need to easily and intuitively control any room AV devices from one place.



# Kramer Control

A cloud-based, enterprise-class AV control platform

Delivers advanced, user-friendly control in any space, quickly and easily. Enables control of any in-room AV and automation devices, from anywhere.

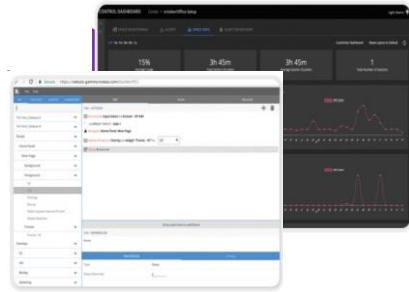




# Control Portfolio

SI/IT Manager

Builder & Manager



Kramer Control  
Cloud-based Software



Coming Soon

KC On-prem

SI/IT Manager

Brain



New

KC-Virtual Brain 1 & 5



KC-BRAINware 25

SI/IT Manager

Gateway



Gateways

End-User

User Interface



Keypads



New

KT-205  
Wall Mount

KT-208  
Wall & Table Mount



KT-2010  
Wall & Table Mount

Kramer Control App

# Control – Key Selling Points

## Easily set up and Control any space

- Effortless configuration and personalization
- Fast Deployment
- Versatile Control
- Always up-to-date

## Easily Scalable for large deployments

- Outstanding functionality referencing room types or shared devices
- Secured, IT-friendly control
- Advanced Dashboard

## Seamless end-user experience

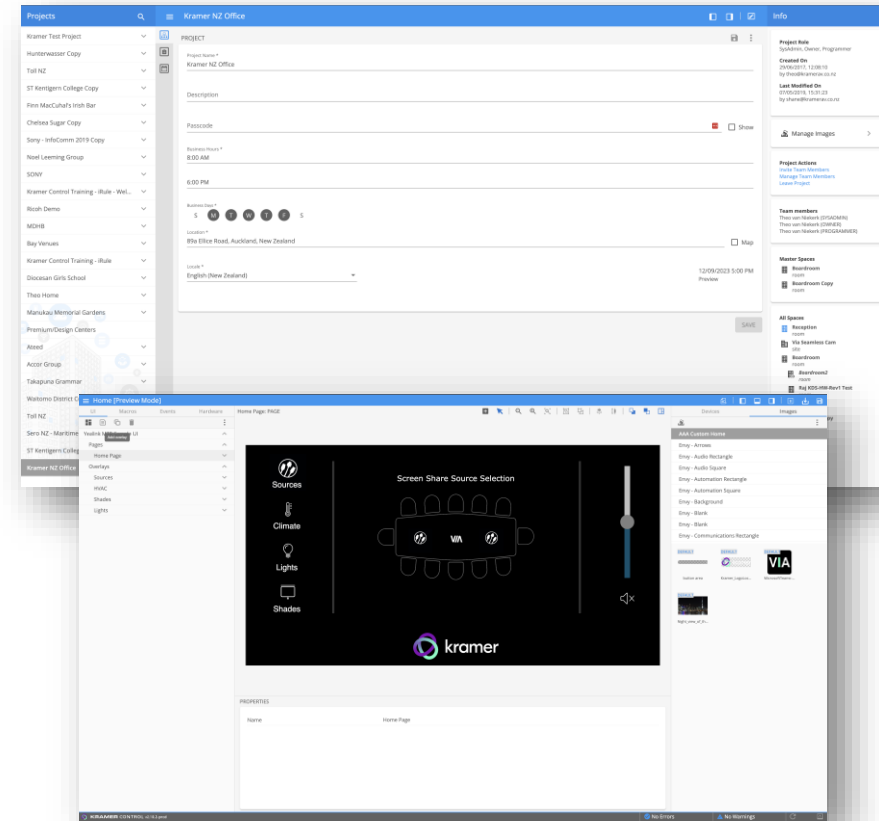
- Intuitive Control
- Control integration with Microsoft Teams® room partner with Yealink
- Full room control at a touch

**What does  
the product do**



# Builder & Manager

- **The Manager** allows you to create, edit, and view Projects with detailed location and scheduling information, enabling better organization and control of each Project's unique requirements.
- **The Builder** is where you craft your user interface, where you can add distinct backgrounds, set up scheduled events, execute macros, and build the control logic; it's where the Project Architect creates a user-friendly and visually appealing layout



# Brains

The "**brain**" is exactly that, the brain—it's the central unit that handles user input, processes them, and makes sure all the AV devices work together smoothly whether directly over IP or via gateway.

With the new virtual brains we have 2 main options

1. A single compute per space typically used for more complex spaces
2. A shared compute that will allow up to 5 spaces to be controlled



# Gateways

In Kramer Control, a gateway acts as the bridge connecting legacy control interfaces to the brain over IP, enabling users to efficiently manage and control their AV systems through a unified interface.

Current gateways include

- IP-to-RS-232
- IP-to-Infrared
- IP-to-Relay
- IP-to-GPIO
- IP-to-CEC



# User Interface – Control Panels

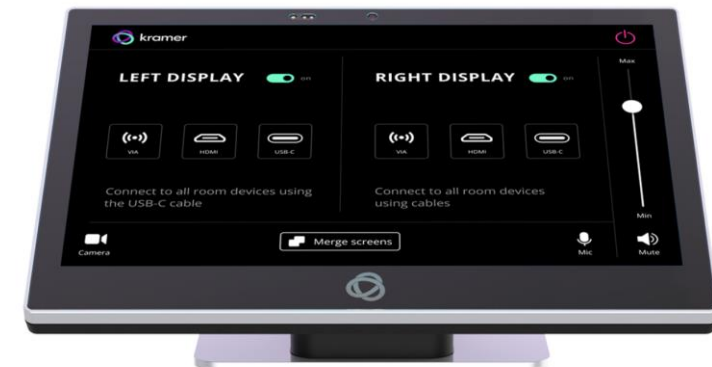
The user interface is an interactive screen that serves as a user-friendly control centre, allowing end users to easily operate and manage various audio-visual devices within their system by tapping, swiping on-screen control elements, simplifying the overall control experience.

Currently Available in three sizes

5.5" Wall mount

8" Wall mount or Table-top

10" Wall mount or Table-top

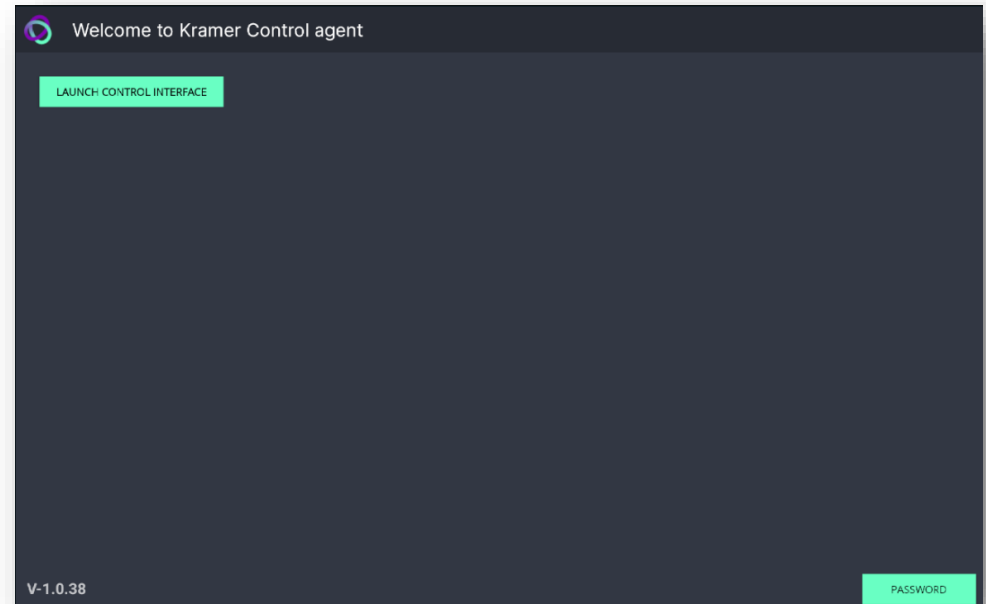


# K-Agent

The K-agent is replacing the Kramer Control App. Effectively turning the tablet into an addressable device.

The User Interface can be specified in 3 ways.

1. From the Tablet using the built-in web-browser
2. Remotely from your laptops web-browser
3. With-in the builder using the as part of the publish process. Using the built in Driver & initializing macro





# Key challenges and use cases



# 3 Key challenges end users & SI's Face



- Complex rooms needs to be intuitive to operate.



- Different devices speak different languages.



- Each space behaves differently.
- Each user wants it to be easy

# Enterprise Room Control



# Education Class Control





# Government Space Control (Court Room)



# Government Space Control

## Command & Control Center



# Case studies





# Luxury Golf Estate



# Use Case

## Hospitality | Room Status Monitoring

### The Challenge/Need

The Customer needed to have a visual representation of the room Status

- DND
- Make-up-room

A simple way to trigger room check-in/out triggering Lighting, heating/cooling

The SI failed to deliver a working solution using a competitor product

### The Solution

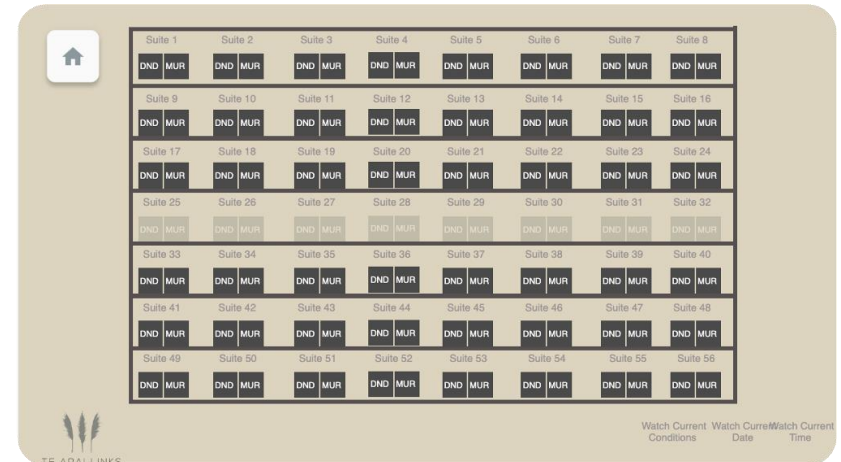
- Kramer Control with a custom multicast feedback driver mixed with a UDP Control driver of the lighting control system
- Flexible and knowledgeable network admin to make the required network adjustments.

### The Result

- The Customer has full visibility of the room room/suite status
- The SI as been request to increase to solution to cover new additions in the future

### Products in use

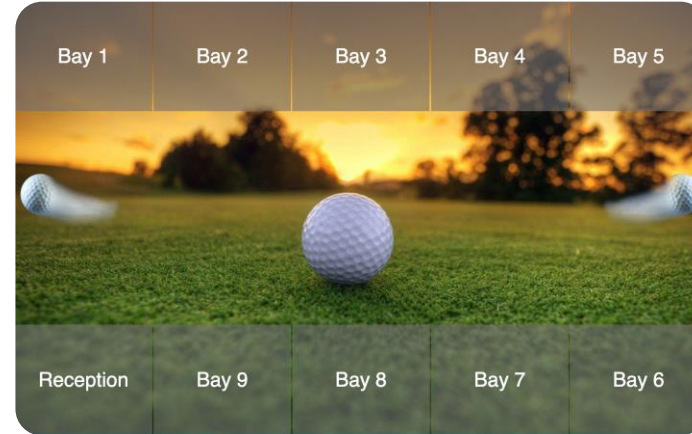
- 1 x SL-240C
- 1 x Web UI full screen (1 interface)
- 40 x Zen Control Lighting Controllers
- 1 x Custom Multicast monitoring feedback driver aliased by controller



# Virtual Golf Driving Range



# Virtual Golf Driving Range



# Use Case

## Entertainment | Hospitality

### The Challenge/Need

- Control 9 Virtual Driving Range Bays Easily without any technical knowledge
- Allow any bay to be routed to a Touch display at reception to setup the session
- Easily turn on/off the AV lights & Audio system from the touch panel or based on alarm status.

### The Solution

A fully integrated system controlling AVoIP, lights, audio & set-top box channel control

### The Result

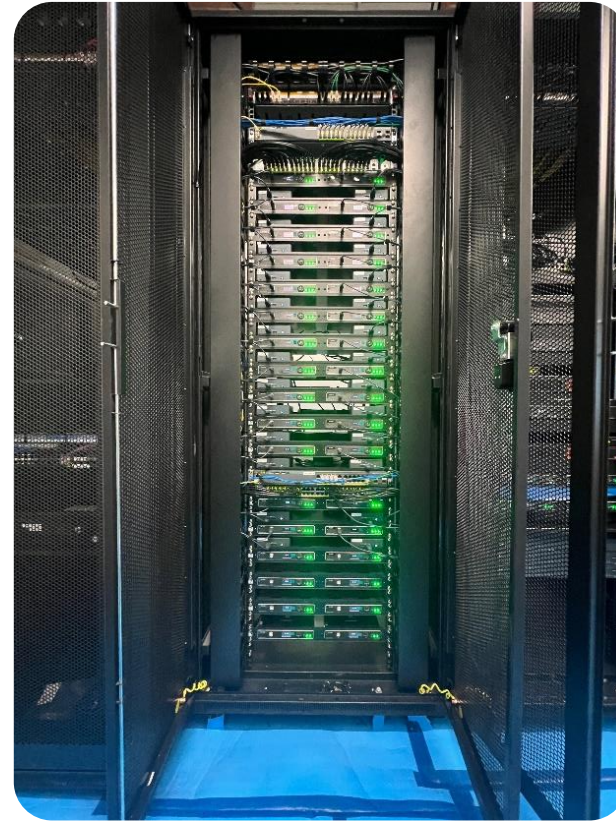
An easy-to-use intuitive user interface allowing control of what is essentially a very complex solution to the end-user.

### Products in use

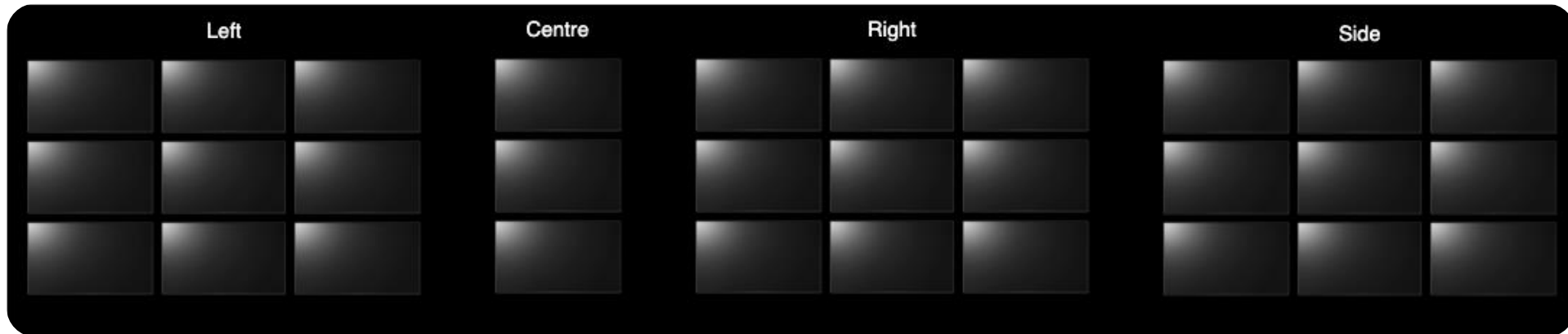
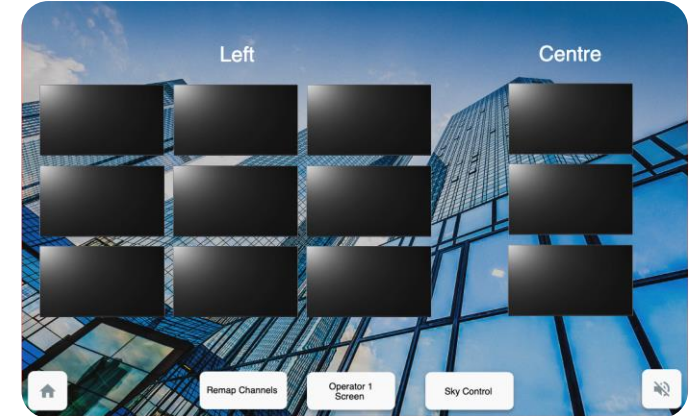
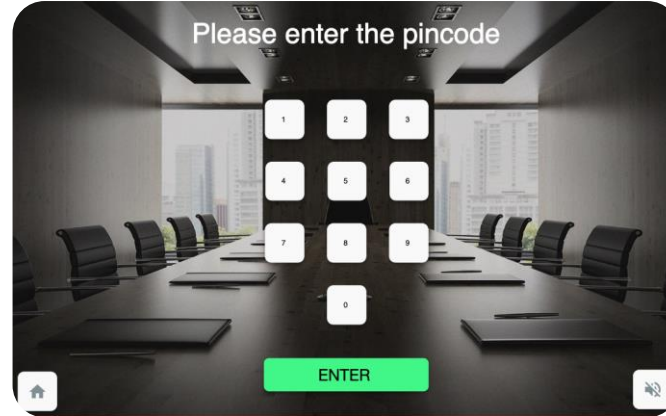
- 1 x SL-280
- 1 x KT-107
- 2x PA-240Z
- 9x Panasonic Projectors
- 1x Phillips Hue
- 1x Zen Control (lighting Control)
- 1 x KT-1010
- 24x KDS-DEC6
- 2x Epson UST Projectors
- 1x Setup Top Box IR
- 2x Netgear M4300



# Credit Card Processor Control Room



# Credit Card Processor Control Room



# Use Case

## Control Room | AVoIP & Control

### The Challenge/Need

- Provide an intuitive unique user interface for 3 operators to easily route any display on the wall to their local workstation with Full KVM support
- Provide the ability to update the PC Name on the UI without the need to reprogram the system.
- Allow Crestron control to pass IR & RS-232 Command through the KDS-7 outside of the NOC centre

### The Solution

- A very complex control design that monitors the monitor selected by the operator to instantly switch Full KVM to one or many Operators stations.
- Based on KDS-7 and fully utilizing their VLAN-Aware facility to separate the multicast and Control networks logically.

### The Result

- The operators have full control of all channel assignment on the "Wall" and from the wall.
- The meeting space using Crestron flex are able to control set-top boxes and display by routing IP commands through the KDS-7's to the respective endpoints.

### Products in use

- 1x KC-Virtual Brain-5
- 3x KT-1010
- 33x KDS-DEC7 (Control & Multicast on own VLAN)
- 1x STB (IP-to-IR via KDS-EN7 by Kramer & Crestron)
- 1x PA-240Z
- 9x Samsung TV - (IP-to-RS-232 via KDS-DEC7 by Crestron)





# IKH Arena, Kauhajoki, Finland



# Use Case

## Sport/Leisure | AVoIP & Control

### The Challenge/Need

- Make home games more exciting with an immersive AV experience
- Enable easy sharing of images and audio from various points, across multiple sources
- Avoid the need to have an AV specialist onsite during games
- Support customization and easy expansion, to meet evolving needs

### The Solution

- The comprehensive system includes 50 KDS-7 encoders and decoders, and Kramer Control with SL-240C and KT-1010 touch panels.
- In addition to scoring top marks for its products' capabilities and ease of use, Kramer's local presence and support were a major plus, helping make Kramer the top choice

### The Result

- The setup is really easy to use, which was one of the main points, as they didn't want to have a specialist in the arena at all the times.
- "Kramer has been there every step of the way. They have great local support and service. Products in stock. I also think the reliability is important: everything works, and the quality is impressive."

### Products in use

- 50 KDS-7 encoders/decoders
- Kramer Control – with SL-240C and KT-1010



# The Errigle Inn, Belfast, Northern Ireland



# Use Case

## Entertainment | Control

### The Challenge/Need

- Install a flexible and reliable centrally distributed AV system
- Allow staff to easily select video sources, change channels, and send video to specific displays
- Enable faster, easier system management, with the ability to expand with growing needsSupport

### The Solution

- The comprehensive system includes 11 encoders and 30 decoders, Kramer Control and FC-26 units

### The Result

- The Errigle Inn is seeing significant time savings as well as financial benefits from the AV system
- Spending time to create the correct user interface on Kramer Control was a must. We actually split the custom control program into two areas, the first being graphic design and the interface the client would see, and then the technical programming side.

### Products in use

- KDS-EN6 & KDS-DEC6
- FC-26
- KC-BRAINware-5
- Kramer Control



# Top 5 Takeaways



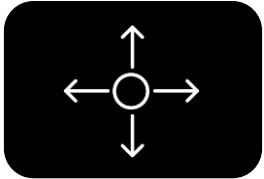
- Easy Configuration
- Short learning Curve



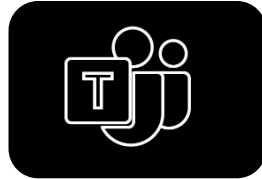
- Personalized predefined template



- Secured, IT friendly solution



- Fast Deployment across multiple Spaces



- Control with Microsoft Teams Room©
- Partner with Yealink

# Kramer Academy

The Pro AV world is in a state of constant evolution. Our mission is to impart professional, creative and up-to-date knowledge so you don't get left behind.



Enrich your AV knowledge and fast track your Pro AV education

[Go to Live Training Events](#)



Get certified by Kramer today and become an authority on Pro AV!

[Go to Certification](#)

**Q&A**



**Thank you!**

