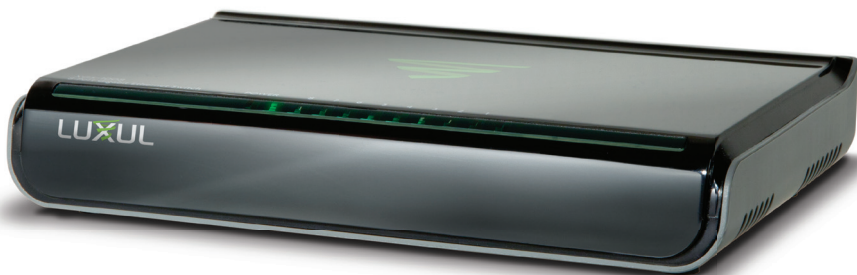


# LUXUL

*Simply Connected*

## Quick Install Guide XGS-1008 8-Port Gigabit Desktop Switch



### Use the XGS-1008 to:

- ▶ Expand Your Home or Office Network with 8-Ports (10/100/1000)
- ▶ Future Proof Your Network with Gigabit Speeds (10X Performance of Fast Ethernet)
- ▶ Set-up a Dedicated Network for Optimizing VoIP, Video, Security, or Gaming Applications.

## Quick Install Guide

Model Number: XGS-1008

8-Port Gigabit Desktop Switch

© 2015 Luxul. All Rights Reserved.

No part of this publication may be modified or adapted in any way, for any purposes without permission in writing from Luxul. The material in this manual is subject to change without notice. Luxul reserves the right to make changes to any product to improve reliability, function, or design. No license is granted, either expressly or by implication or otherwise under any Luxul intellectual property rights. An implied license only exists for equipment, circuits and subsystems contained in this or any Luxul product.

## DOCUMENT CONVENTIONS

The following graphical alerts are used in this document to indicate notable situations:



**NOTE:** Tips, hints, or special requirements that you should take note of.



**CAUTION:** Care is required. Disregarding a caution can result in data loss or equipment malfunction.



**WARNING!** Indicates a condition or procedure that could result in personal injury or equipment damage.

## FCC COMPLIANCE

This device complies with Part 15 of the FCC Rules. Operation is subject to the following two conditions: (1) this device may not cause harmful interference, and (2) this device must accept any interference received, including interference that may cause undesired operation.

## CONTACT LUXUL

### Sales

P: 801-822-5450

E: sales@luxul.com

### Technical Support

P: 801-822-5450

E: support@luxul.com

## PACKAGE CONTENTS

Please check the contents carefully after you open the packing:

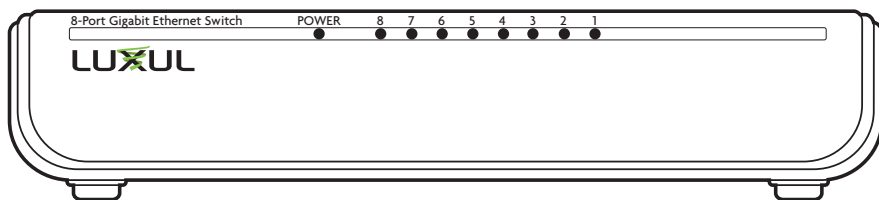
- ▶ XGS-1008 8-Port Gigabit Desktop Switch
- ▶ Power Adapter
- ▶ Quick Install Guide

If any of the listed items are missing or damaged, please contact the reseller from whom you purchased the XGS-1008 for return/replacement.

## HARDWARE DESCRIPTION

### Front Panel and

The front panel of the XGS-1008 includes 8 Link/Activity LED's and one power LED. Please refer to the detailed description of these indicators in Section 1.4 below.



*XGS-1008 Front Panel View*

## LED Indicators

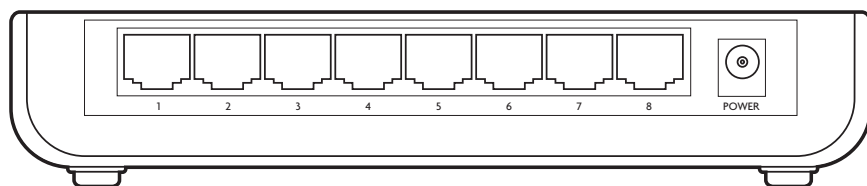
The LED indicators of the XGS-1008 include 1 Power indicator and 8 Link/Activity indicators. These LED indicators show the operating status of the XGS-1008 and each switch connection.

The following chart shows the LED indicators of the XGS-1008 along with an explanation of the indicator's properties:

LED	Color	Status	Description
Power	Green	ON	This indicator lights up when the XGS-1008 is powered
	—	OFF	If this indicator is not lit, please check the DC power supply to ensure proper connection to the outlet and the XGS-1008.
Link/ Activity	Green	ON	Indicates the XGS-1008 is connected at 1000Mbps.
		Blinking	Indicates the XGS-1008 is transmitting/receiving data packets at 1000Mbps.
	Orange	ON	Indicates the XGS-1008 is connected at 10/100Mbps.
		Blinking	Indicates the XGS-1008 is transmitting/receiving data packets at 10/100Mbps.
—	OFF	Indicates the port is not connected to a device.	

## Rear Panel Layout

The Rear Panel of the XGS-1008 includes 8 10/100/1000Mbps RJ-45 Ethernet ports and one DC power port used for DC power input.



*XGS-1008 Rear Panel View*



**CAUTION:** Please use the included power supply. If a different power supply is used, it could damage the XGS-1008

## PREPARING FOR INSTALLATION

### System Requirements

- ▶ **Ethernet Cables** to connect the XGS-1008 to Ethernet enabled devices
- ▶ **Power** should be AC 100-240V- 0.1A(Max) 50/60Hz.

### Installation Requirements

- ▶ Install the XGS-1008 in a stable/safe place to avoid any possible damage
- ▶ Inspect the AC power cord to ensure that it is correctly connected and undamaged.
- ▶ To avoid electric shock, DO NOT open the XGS-1008 housing (no user serviceable parts inside). Opening the XGS-1008 will void your warranty.
- ▶ It is recommended that the XGS-1008 is positioned away from direct sun light
- ▶ Ensure there is sufficient space around the XGS-1008 for proper ventilation and heat dissipation. It is recommended to have at least 4-6 inches around all sides.

### Before Connecting to the Network

Before connecting the XGS-1008 to the network, please check the following:

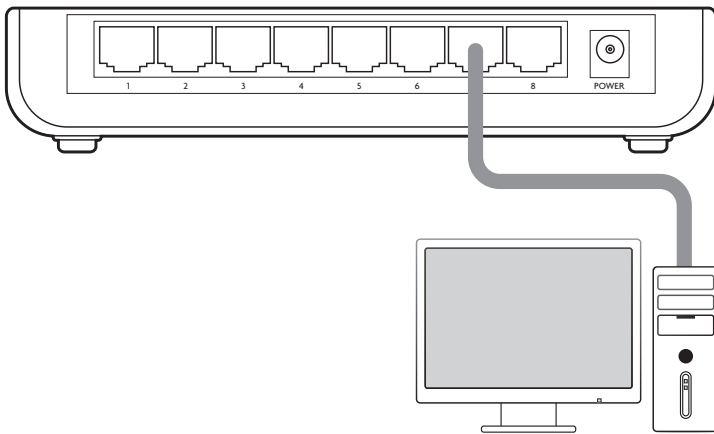
- ▶ Determine placement location. Do not place any heavy articles on the XGS-1008.

- ▶ Ensure there is adequate space for proper heat dissipation and ventilation around the XGS-1008.
- ▶ Power socket should be within 4 feet of the XGS-1008.
- ▶ Check power adapter to confirm safe and secure connection.

## XGS-1008 INSTALLATION

### Connecting Devices

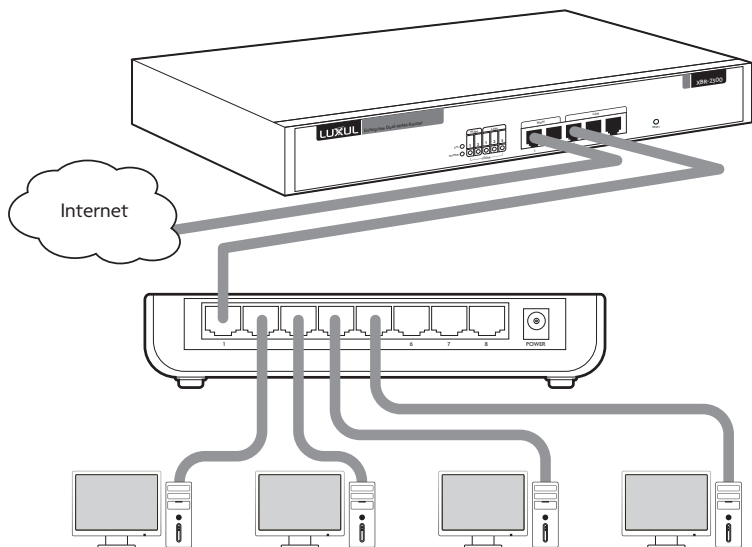
Use standard Ethernet CAT5, CAT5e or CAT6 cable to connect the XGS-1008 to a device as described below (CAT6 must be used in order to achieve full Gigabit bandwidth). The XGS-1008 will automatically adjust to the characteristics (speed/duplex) of the device to which it is connected.



### Connecting the XGS-1008 to a Device

When a device is properly connected, the Link/Activity LEDs for each port lights up green/orange. Please refer to the LED Indicators section for definitions and troubleshooting.

## Connecting to a Router or Other Switch



### *Connecting the XGS-1008 to a Router or Switch*

When a device is properly connected, the Link/Activity LEDs for each port light up green/orange. Please refer to the LED Indicators section for definitions and troubleshooting.

## FCC Statement:

This equipment has been tested and found to comply with the limits for a Class B digital device, pursuant to part 15 of the FCC Rules. These limits are designed to provide reasonable protection against harmful interference in a residential installation. This equipment uses and can radiate radio frequency energy, and if not installed and used in accordance with the instructions may cause harmful interference to radio communications. However; there is no guarantee that interference will not occur in a particular installation. If this equipment does cause harmful interference to radio or television reception, which can be determined by turning the equipment off and on, the user is encouraged to try to correct the interference by one or more of the following measures:

- ▶ Reorient or relocate the receiving antenna.
- ▶ Increase the separation between the equipment and receiver.
- ▶ Connect the equipment into an outlet on a circuit different from that to which the receiver is connected.
- ▶ Consult the dealer or an experienced radio/TV technician for help.



Hereby, Luxul, 14203 Minuteman Drive, Suite 201, Draper, Utah, 84020, declares that this Luxul XGS-1008 is in compliance with the essential requirements and other relevant provisions of Directive 1999/5/EC.

For a copy of this report send a self addressed stamped envelope to:  
Luxul CE, 14203 Minuteman Drive, Suite 201, Draper, Utah, 84020.

Information on this document supersedes all previous versions.  
Products and documents subject to change without notice.  
Products may be discontinued without notice.