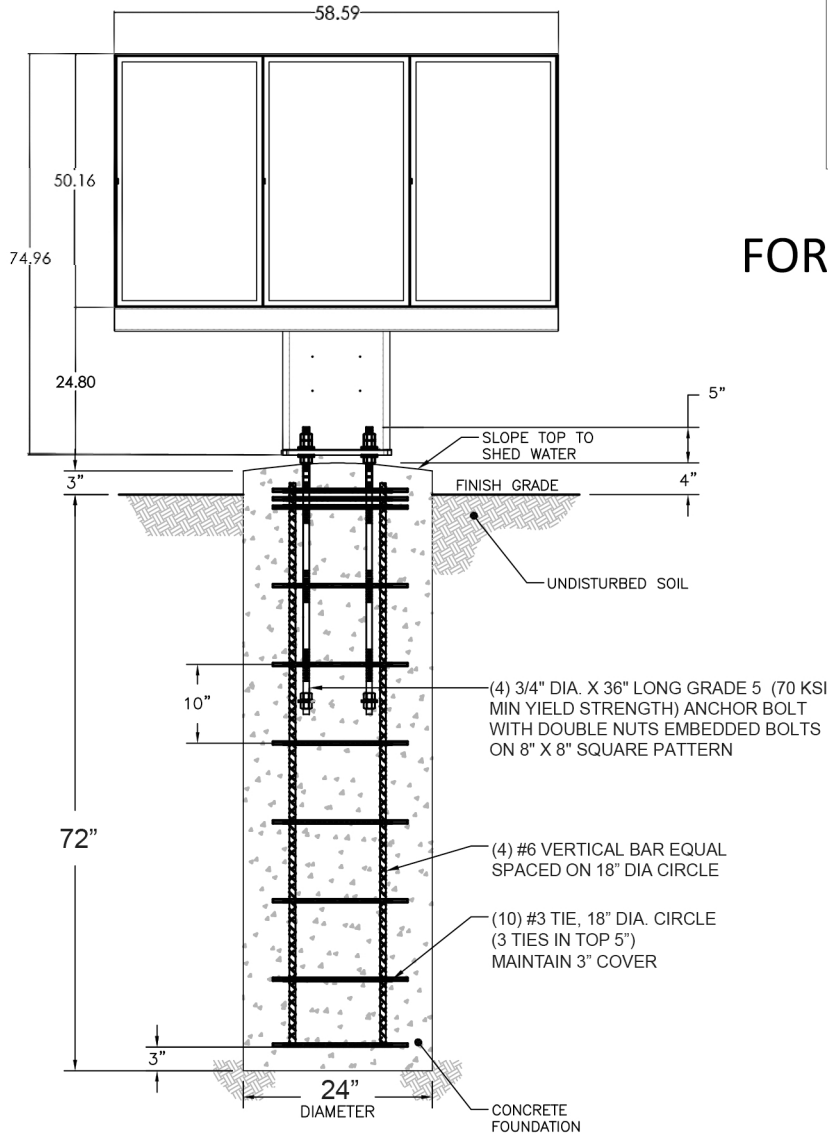


3 Panel MENU BOARD FOUNDATION

DESIGN PARAMETERS:
 2009 INTERNATIONAL BUILDING CODE
 ASCE 7-05
 BASIC WIND SPEED = 110 MPH
 WIND IMPORTANCE FACTOR 1.0
 WIND EXPOSURE C

FOUNDATION:
 ASTM A615 GR 60 REBAR
 3000 PSI CONCRETE @ 28 DAYS
 CLASS 5 SOIL
 1500 PSF SOIL BEARING
 100 PSF/LF SOIL LATERAL BEARING
 UNDISTURBED SOIL

FOR REFERENCE ONLY



PEERLESS INDUSTRIES, INC.
 2300 WHITE OAK CIRCLE
 AURORA, IL 60502

NOTE: THIS DRAWING SHALL BE USED FOR GENERAL REFERENCE ONLY. IT IS THE RESPONSIBILITY OF THE INSTALLER TO VERIFY THAT ALL STATE AND LOCAL CODES ARE MET. CONTACT LOCAL MUNICIPALITY FOR DETAILS. PRIOR TO INSTALLATION, IT IS THE INSTALLERS RESPONSIBILITY TO CONTRACT WITH A DESIGN PROFESSIONAL TO ENSURE THAT ALL STATE AND LOCAL CODES ARE MET.

SIZE	ENG. PROJ. NO.	150	PRT. / DWG. NO.	
SCALE	NOT TO SCALE		SHEET	1 OF 1