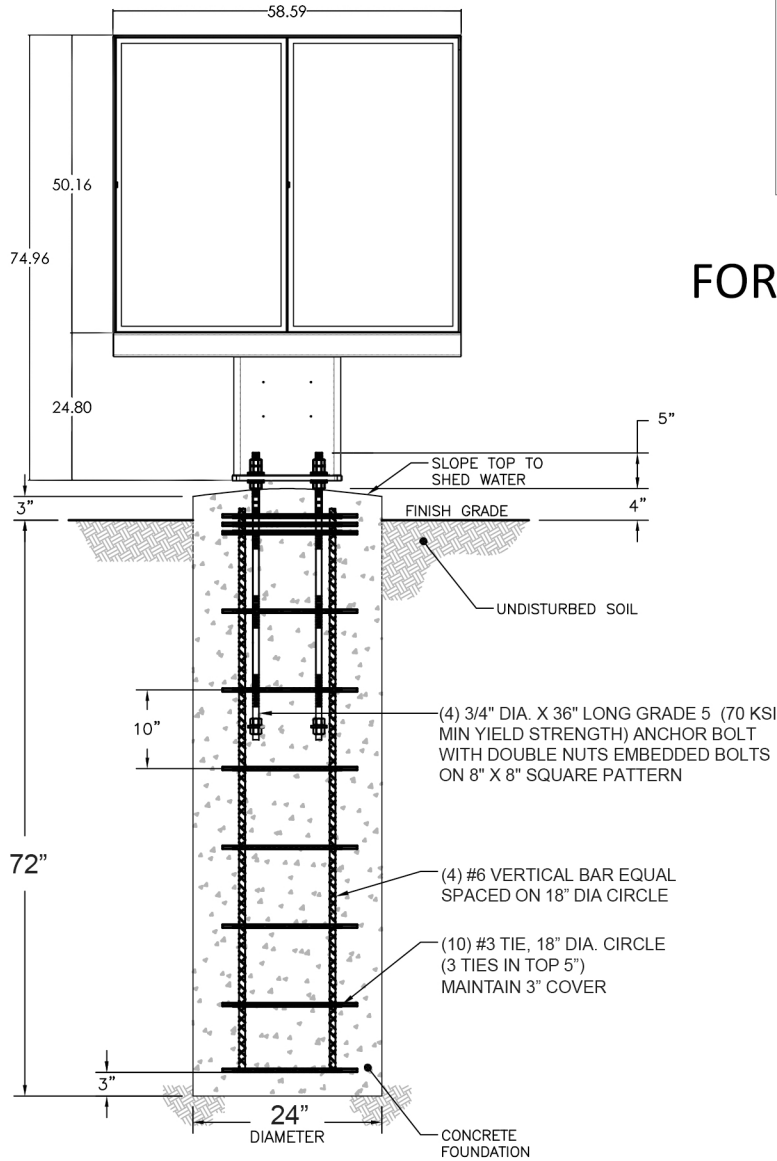


# 2 Panel MENU BOARD FOUNDATION

DESIGN PARAMETERS:  
 2009 INTERNATIONAL BUILDING CODE  
 ASCE 7-05  
 BASIC WIND SPEED = 110 MPH  
 WIND IMPORTANCE FACTOR 1.0  
 WIND EXPOSURE C

FOUNDATION:  
 ASTM A615 GR 60 REBAR  
 3000 PSI CONCRETE @ 28 DAYS  
 CLASS 5 SOIL  
 1500 PSF SOIL BEARING  
 100 PSF/LF SOIL LATERAL BEARING  
 UNDISTURBED SOIL

**FOR REFERENCE ONLY**



PEERLESS INDUSTRIES, INC.  
 2300 WHITE OAK CIRCLE  
 AURORA, IL 60502

NOTE: THIS DRAWING SHALL BE USED FOR GENERAL REFERENCE ONLY. IT IS THE RESPONSIBILITY OF THE INSTALLER TO VERIFY THAT ALL STATE AND LOCAL CODES ARE MET. CONTACT LOCAL MUNICIPALITY FOR DETAILS. PRIOR TO INSTALLATION, IT IS THE INSTALLERS RESPONSIBILITY TO CONTRACT WITH A DESIGN PROFESSIONAL TO ENSURE THAT ALL STATE AND LOCAL CODES ARE MET.

SIZE	ENG. PROJ. NO.	150	PRT. / DWG. NO.	
SCALE	NOT TO SCALE		SHEET	1 OF 1