

AUTONOMIC

# eSERIES

## QUICK START GUIDE

Setting Up eSeries Mirage Audio System



CEDIA™



Consumer  
Technology  
Association™  
Member



MIRAGE  
AUDIO SYSTEM

## Mirage Music Streamer Setup

### Device Connections

- Connect Ethernet and power to all eSeries streamers (servers) and amps.
- Non-eSeries amplifiers should be connected via the physical outputs for audio. **NOTE:** All physical outputs will stream simultaneously.

### Web Configuration

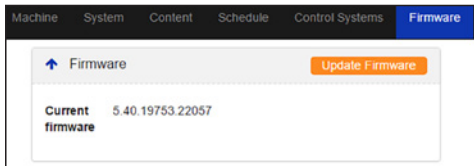
- Open a web browser (IE or Chrome recommended).
- Enter the MMS Web Configuration URL:  
**http://MMS-XXXX.local/config** or **http://<Server-IP>/config**
- See **Locating MMS on the network** below for tips on finding the device by IP address.

### Name the MMS

Click the server gear icon in the System tab to change the default name.

### Update Firmware

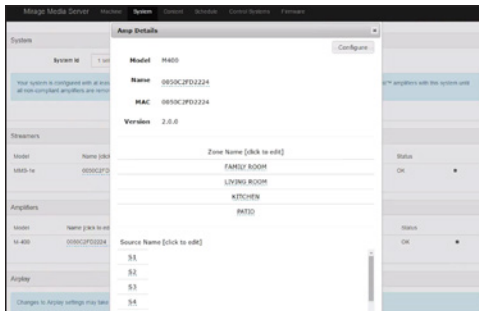
Autonomic regularly releases updates with new fixes and features. It is recommended to update the MMS to the latest MirageOS through the firmware tab of the Web Configuration or through Dealer Zone, Device Manager.



## Amplifier Setup

### Name Zones

Mirage Amplifiers should be automatically discovered and visible in the System tab. Zones are consecutively numbered. Click the gear icon and name every zone you wish to support.



### Name MMS Outputs

When using third-party amplifiers, click the server's gear icon to name the MMS Outputs. This is not necessary for Mirage amplifiers.

## Controlling Playback

### Mirage iOS and Android Control

Support for iPhone, iPad and Android devices available by downloading the Mirage app from the Apple App Store or Google Play store.



## Mirage KP-6 In-wall Keypad Controllers

Connect Cat5 from Mirage amplifier keypad port to KP-6 and assign zone for simple, intuitive in-wall controls.



For more information visit:

[http://www.autonomic-controls.com/products\\_hardware\\_mirage\\_kp6.php](http://www.autonomic-controls.com/products_hardware_mirage_kp6.php)

### Third-party Control

The MMS is fully IP-controllable. Autonomic supports integration with a wide array of third-party control systems on the market today.



Sample programs are available for download at:

[http://www.autonomic-controls.com/support\\_downloads.php](http://www.autonomic-controls.com/support_downloads.php)

### Reset to Factory Defaults

Press and hold the RESET button for 15 seconds while powering on the MMS to revert to factory defaults. **Warning:** This action may take several minutes to complete and result in all media and configuration data being erased.

## Locating MMS on the Network

Use one of these methods to locate the device's IP address:

- Connect a monitor to the MMS via HDMI. The IP address should be displayed on the upper left corner of the **Now Playing** screen.
- Ping using the default device name:  
MMS-(last 4 characters of your MAC address).local. eg. **MMS-2C45**
- Review the DHCP/router tables for the IP Address of the MMS.
- Use a network IP Scanner.
- Download the Autonomic Discovery Tool (for Windows) from the Autonomic knowledgebase:  
<http://www.autonomic-controls.com/kb/index.php?View=entry&EntryID=80>



### Federal Communications Commission Declaration of Conformity

This equipment has been tested and found to comply with the limits for a Class B digital device, pursuant to Part 15 of the FCC Rules. These limits are designed to provide reasonable protection against harmful interference in a residential installation. This equipment generates, uses, and can radiate radio frequency energy and, if not installed and used in accordance with the instructions, may cause harmful interference to radio communications. However, there is no guarantee that interference will not occur in a particular installation. If this equipment does cause harmful interference to radio or television reception, which can be determined by turning the equipment off and on, the user is encouraged to try to correct the interference by one or more of the following measures:

- Reorient or relocate the receiving antenna.
- Increase the separation between the equipment and receiver.
- Connect the equipment into an outlet on a circuit different from that to which the receiver is connected.
- Consult an authorized dealer or service representative for help.

Autonomic is not responsible for any radio or television interference caused by using other than specified or recommended cables and connectors or by unauthorized changes or modifications to this equipment. Unauthorized changes or modifications could void the user's authority to operate the equipment. This device complies with Part 15 of the FCC Rules. Operation is subject to the following two conditions: (1) this device may not cause harmful interference, and (2) this device must accept any interference received, including interference that may cause undesired operation.

The user is cautioned that any changes or modifications not expressly approved by the party responsible for compliance could void the user's authority to operate the equipment.